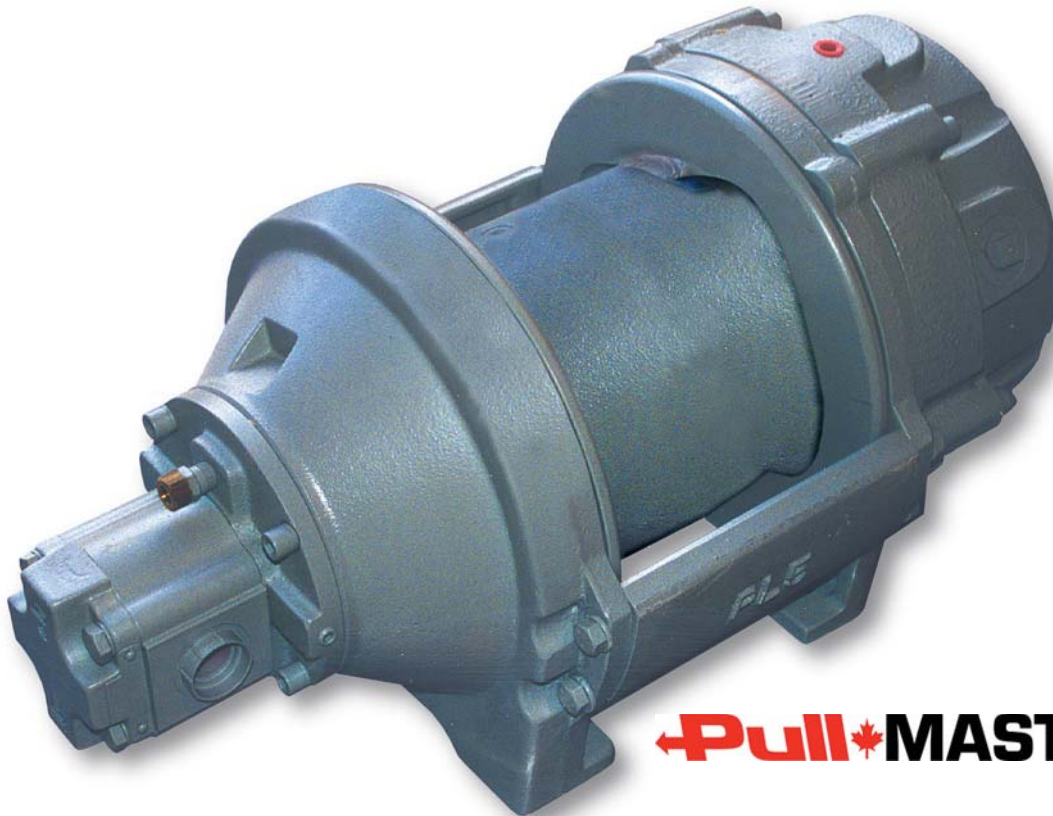


# BHW

Bushey Hall Winchmaster

[www.bhwgroup.com](http://www.bhwgroup.com)

## PULLMASTER PL5D Freefall Hydraulic Winch



**PullMASTER®**

### Unique Mini-Piling Freefall Planetary Hydraulic Winch

#### FEATURES INCLUDE

- *500kg and 1000kg hammer weight lifting capacities available*
- *Long service life*
- *Compact design – totally enclosed*
- *Can be used for raising and lowering a load when FREEFALL is not activated*
- *Automatic multi – disc brake*
- *High speed operation*
- *Built to operate in marine environment*

**Bushey Hall Winchmaster** [sales@bhwgroup.co.uk](mailto:sales@bhwgroup.co.uk) [www.bhwgroup.com](http://www.bhwgroup.com)

**Southern Office:** Lismirrane Industrial Park, Elstree Road, Elstree, Herts, WD6 3EE Tel: +44 (0)20 8953 6050 Fax: +44 (0)20 8207 5308

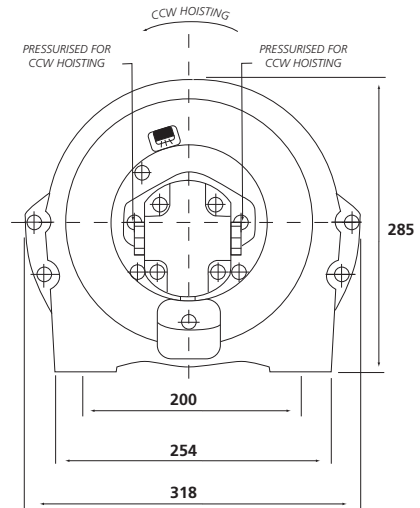
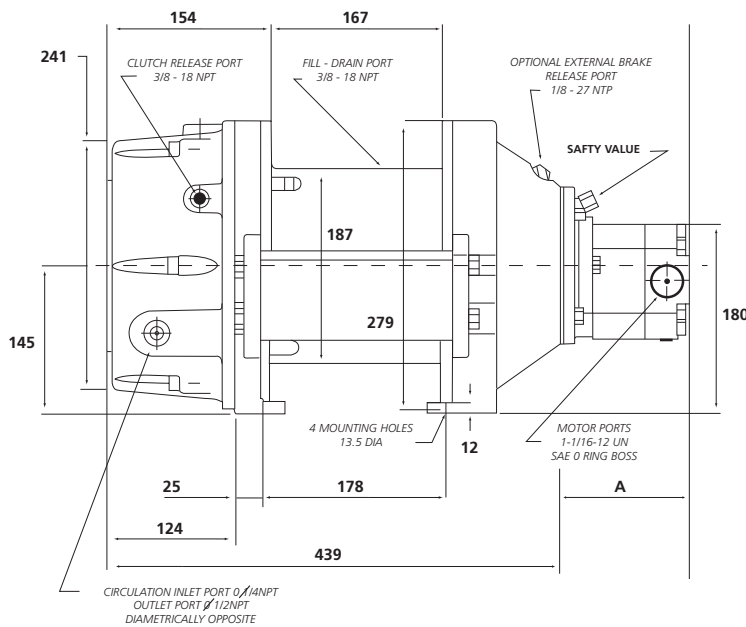
**Northern Office:** 6 South Orbital Trading Park, Hedon Road, Hull, East Yorkshire, HU9 1NJ Tel: +44 (0)1482 223 663 Fax: +44 (0)1482 218 285

Bushey Hall Winchmaster is a division of BHW Group Limited. Registered in England No. 1342461

REMSA CE



CERT. No. 1769



ROTATION COUNTERCLOCKWISE WHEN LIFTING  
(VIEWED FROM MOTOR END)

### PERFORMANCE

MODEL NUMBER	HYDRAULIC REQUIREMENTS		DRUM		BARE DRUM		MEAN DRUM		FULL DRUM	
	FLOW Lt/min	PRESSURE Bar	TORQUE Nm	R.P.M.	LIFTING CAPACITY Kg	LINE SPEED m/min	LIFTING CAPACITY Kg	LINE SPEED m/min	LIFTING CAPACITY Kg	LINE SPEED m/min
PL5 -12-211-ID	42	155	1765	35	1815	22	1580	26	1340	30
PL5 -12-213-ID	42	155	883	69	910	43	790	51	670	58
PL5 -12-210-ID	91	145	1986	66	2000	41	1775	48	1500	56

### DIMENSIONS

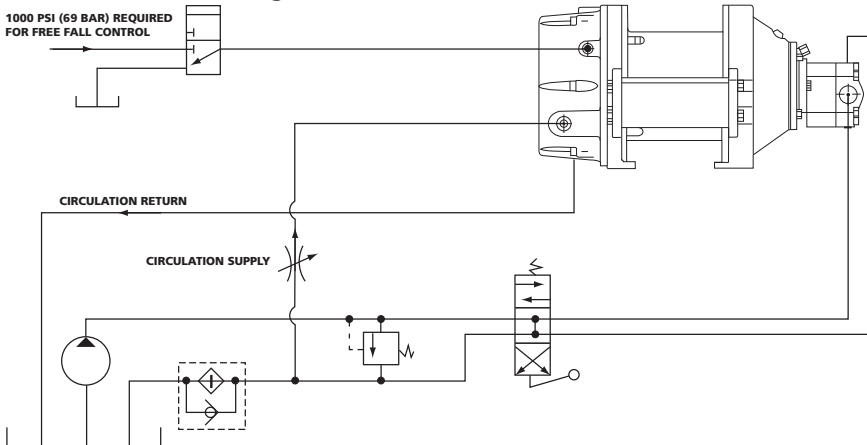
MODEL NUMBER	A
PL5 -12-211-ID	135
PL5 -12-213-ID	116
PL5 -12-210-ID	145

### CABLE STORAGE m

DRUM DIA	FLANGE DIA	DRUM LENGTH	WIRE ROPE DIA mm			
			6	8	10	12
187	279	167	106	66	40	30

### MAXIMUM RECOMMENDED HAMMER WEIGHT

- PL5 -12-211-ID -1000Kg
- PL5 -12-213-ID -500Kg
- PL5 -12-210-ID -1100Kg



### NORMAL OPERATION

The winch is set to permanent lift mode. When the hammer reaches required height above pile it is released using manual or electric control valve. Maximum operating pressure 155 Bar. Free fall clutch release 52 Bar.

### TYPICAL HYDRAULIC CIRCUIT SHOWING HYDRAULIC FLOW

- 42 Lt/min to winch motor (max.)  
- PL5 -12-211-ID & PL5 -12-213-ID  
91 Lt/min to winch motor (max.)  
- PL5 -12-210-ID
  - 8 Lt/min cooling oil to free fall clutch
  - 2.0 Lt/min to release clutch
- Total weight (Wire rope not included) 100kg

### NOTES

These winches must not be used for the movement of personnel and 5 wraps of wire rope must be maintained on the drum.

Data shown is approximate and intended as a guide only.

### WARRANTY

Each new winch is guaranteed against defects in workmanship and material defects for a period of twelve months from date of purchase.

Wire ropes are not included under warranty.